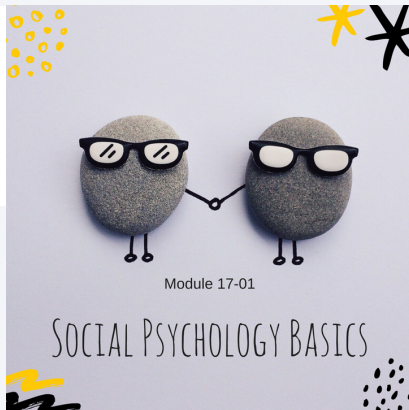


# PROFESSIONAL DEVELOPMENT

## Social Psychology, Personality & the Future of Work

#1



### Social Psychology Basics

How is our behaviour influenced by our social environment?

This module looks at: individual behaviour, group dynamics, relationships, influence, power and authority. **CLICK HERE**

#2



### Organisational Psychology

Organisational psychology studies human behaviour in the workplace. The selection, performance, motivation, job satisfaction and engagement of employees are key areas of focus.

**CLICK HERE**

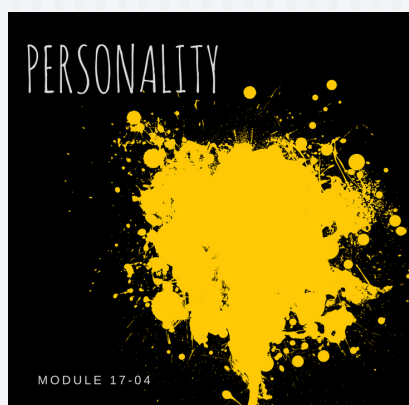
#3



### Motivation

An understanding of motivation theory can be quite helpful when working with teenagers and in career exploration more broadly. It's also a nice lead in to our deep dive in to personality in Module 4. **CLICK HERE**

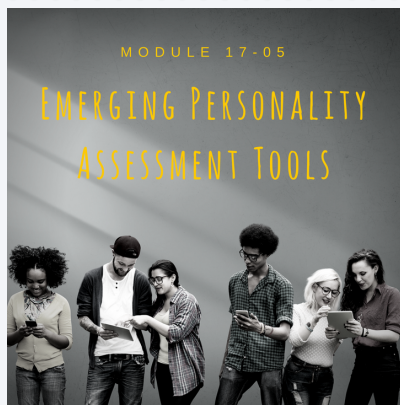
#4



### Personality

This module looks at the development of personality theory with a focus on understanding the 'Big Five'. We also look at the major personality assessments in use for occupational testing. **CLICK HERE**

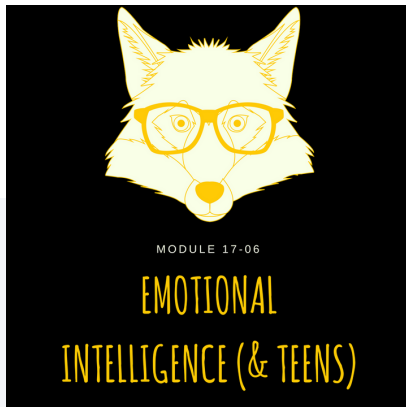
#5



## Emerging Personality Assessment Tools

With advances in technology come opportunities for assessment tools. Big data analytics, social media scanning and gamification are all set to play a role. **CLICK HERE**

#6



## Emotional Intelligence

Emotional Intelligence (having it and measuring it) is increasingly making its way onto lists of important competencies for young people and their employability. **CLICK HERE**

#7



## Futurist Trends

Module 7 looks at a range of recently published 'Future-State' research, and the implications these predicted developments may have on our daily lives, our economic situation, and, our workplaces. **CLICK HERE**

#8



## Future of Work

In this, the final module, we will focus in on the skills and occupations that are predicted to be areas of high demand and future growth. **CLICK HERE**

NB: This 8-module digital course was developed in 2017 and was designed for Careers Educators.